

Static Puncture Strength Test Fixture for Geotextiles according to ASTM D6241 Model 174-150-50

This Static Puncture Strength Test Fixture is designed for Geotextiles and Geotextile Related Products and comply to ASTM D6241 Method B, ISO 12236 and GOST 5633

ASTM D6241 is also commonly referred to as the CBR Puncture Resistance test. The California Bearing Ratio was adapted to replace both the Mullens Burst test D3786 and the Geomembrane puncture test D4833.

Both of the later tests have been deemed to produce too much variability because of the inconsistent nature of woven and non-woven fabrics. This procedure provides a much more uniform stress on the sample which better simulate real world conditions.

Geometry:

The standard square sample is clamped down in the non-slip clamping jig consisting of concentric plates with an internal diameter of 150 mm. There are 4 clamping screws that must be tightened to secure the sample. The diameter of the puncture plunger (probe) is 50 mm and it is flat with radial edge of 2.5 mm. There is also a standard specification for the hole opening which can be found in our official literature page.

Connection to the Testing Machine:

The clamping jig and flat rounded puncture probe can be mounted into the testing machine via mounting (female) stud with clevis PIN.

The standard connection size is with internal diameter 20 mm and clevis PIN diameter 8 mm. Any other connecting details are available.

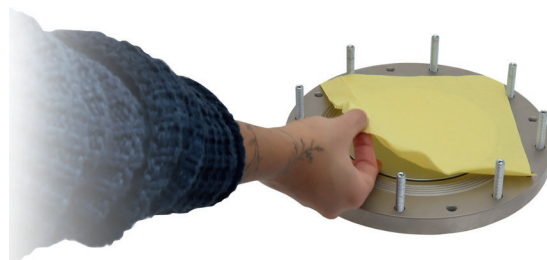
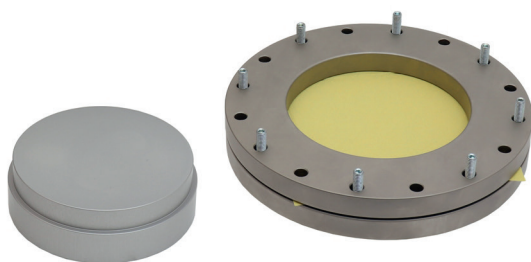
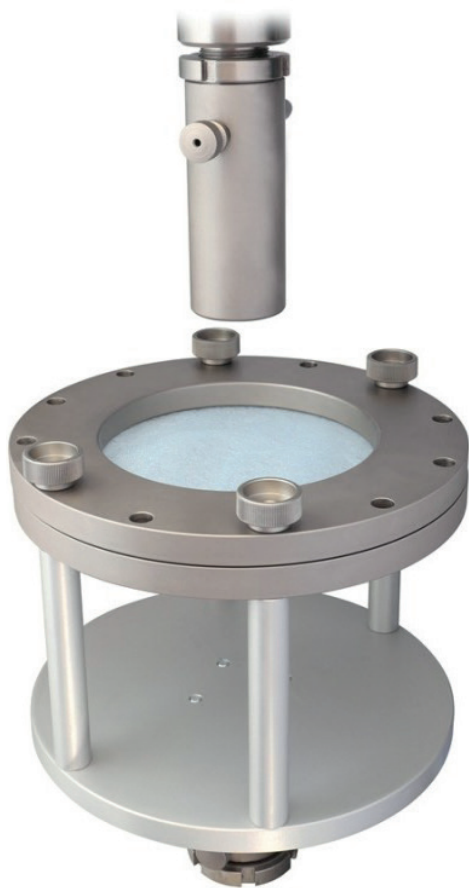
Technical Data

Model		174-150-50
Standards		ASTM D6241 Method B ISO 12236 and GOST 56335
Max. Test Load	kN	50
Temperature Range	°C	0 to +70°C
Fixture Material		Steel nickel plated
Plunger (Probe) Diameter	mm	50
Length of the Plunger (Probe)	mm	120
Container (clamping apparatus)		
Internal Diameter	mm	150
Outside Diameter		250
Total Height		210
Mounting Stud (Female) with Clevis PIN		
Standard		30 / 12
Alternative for example		20 / 8
any other available to suit your testing machine		15.9 / 8

Scope of Supply:

Clamping apparatus with plunger including sample positioning tool.

With connecting detail to the testing machine via mounting stud (female) with clevis PIN. Standard size internal diameter 20 mm / clevis PIN diameter 8 mm, supplied with PIN. Other connecting details available.



Left Picture showing sample positioning tool.