

600 kN Webbing Sling Tensile Grips Series CG600

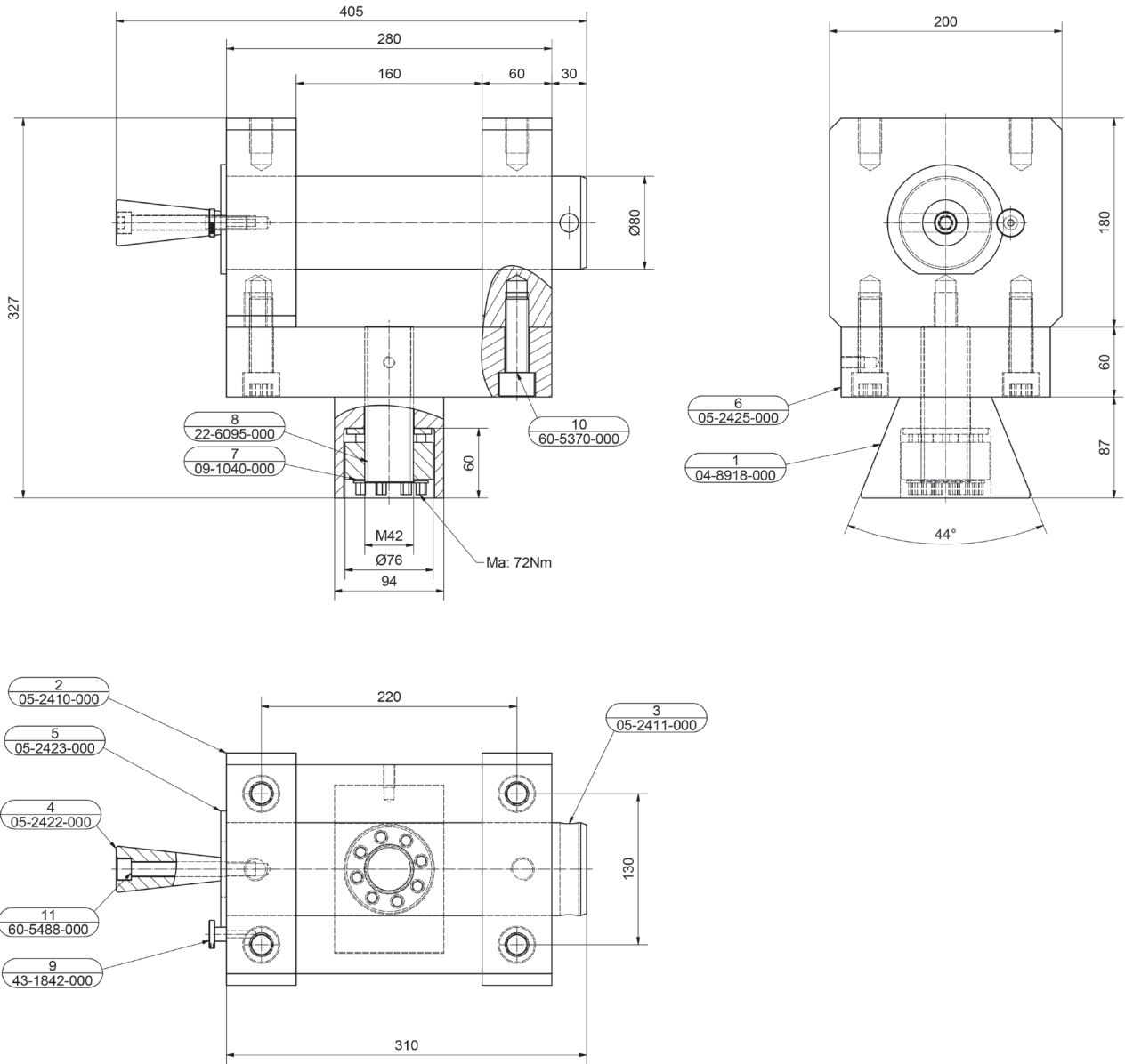
w+b

These clevis tensile grip is designed to test round slings according to EN 1492-2 and other international standards with widths up to 160 mm and maximum tensile forces up to 600 kN.

The specimen loading is quick and easy by the 80 mm diameter Pin.
The Pin can be secured by locking knob.

These grips can be supplied with connecting detail to different testing machines or to be mounted onto the grips installed in the testing machine.





Technical Data

Model		CG600
Item Number		22-4493-001
Max. Tensile Force	kN	600
Max. Specimen Width	mm	160
Pin Diameter	mm	80
Grip Height without connecting Detail	mm	180
Grip Width (with Pin Handle)	mm	405
Grip Depth	mm	200
Weight each Grip	kg	71.5