

Hydraulic Tensile Creep Testing Machines Series LFZ 250 – 1000 kN

Specially designed for creep and relaxation tests
on high-strength screws, wires and other samples.

Features:

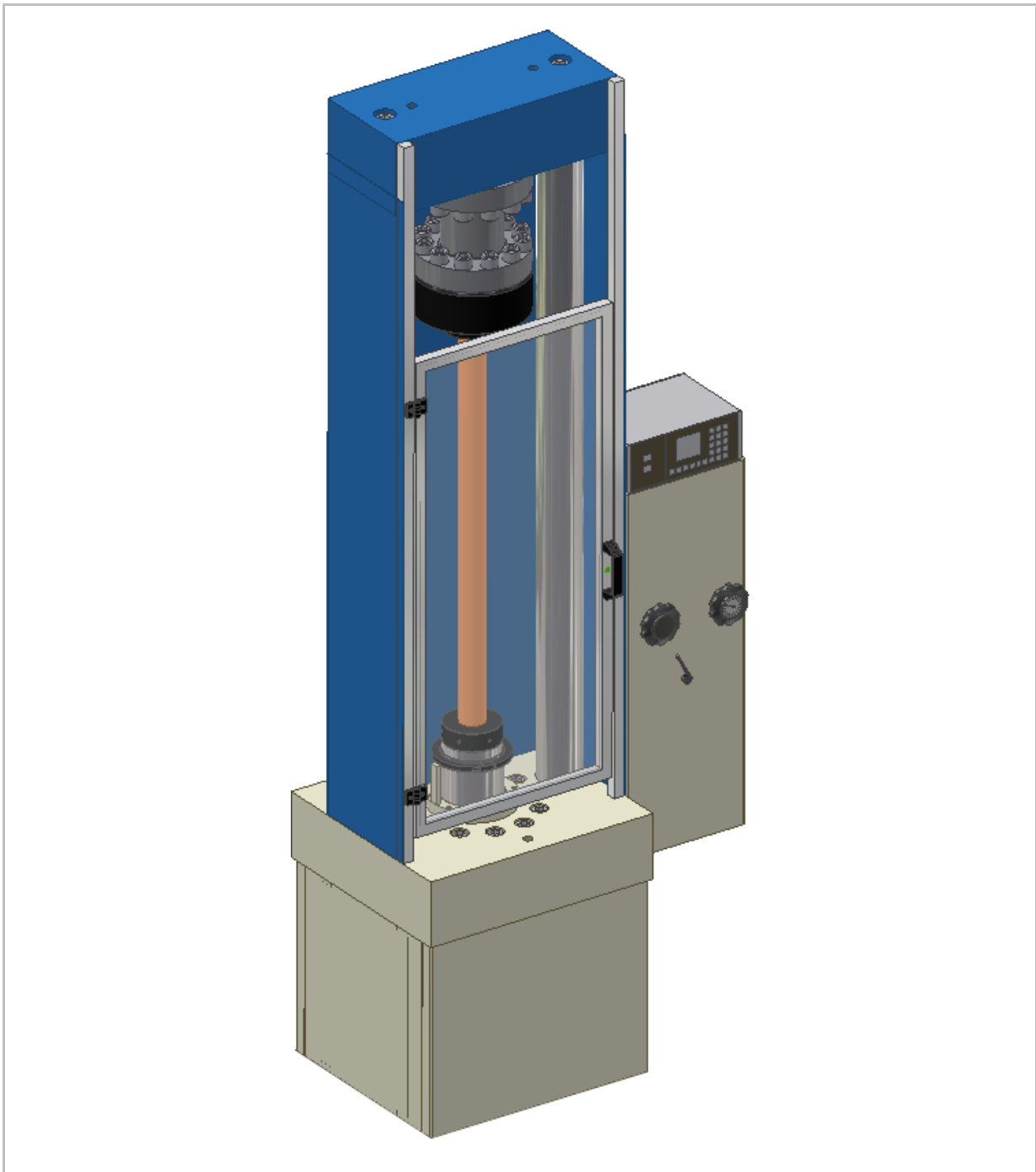
- Rigid load frame with high stiffness.
- Actuator integrated in the base of the machine.
- Force measurement through high precision electronic load cell.
- Precision according to ISO 7500-1 class 0.5.
- Upper and lower adapter with threads according to international standards or according to your needs.
- Chrome plated columns.
- Protection device around the testing chamber with front door.
- Separate free standing hydraulic power pack for the operation of one or more machines.
- With loading and unloading valves.
- Digital indicator for force and travel or deformation with 2-point-regulation for precise constant keeping.
- Creep Testing Software **DION**CREEP for collection sampling, visualization & evaluation of up to 8 machines.
- Optionally available with fully automatic test procedure in connection with digital controller.

w+b



Technical Data

Type	LFZ	250	500	1000
Test load max.:	kN	250	500	1000
Piston stroke:	mm	100	100	100
Distance between adapters:	mm	max. 1000	max. 1000	max. 1000
Daylight between columns :	mm	400	400	400
Column diameter:	mm	100	100	120
Working height:	mm	740	740	740
Width:	mm	1000	1000	1020
Depth:	mm	580	580	600
Height:	mm	2485	2485	2700
Weight:	kg	1560	1560	1930



w+b

walter+bai ag Testing Machines

Industriestrasse 4, 8224 Löhningen, Switzerland, Tel. +41 (0)52 687 25 25, Fax +41 (0)52 687 25 20
E-Mail: info@walterbai.com / Internet: <http://www.walterbai.com>