

Fatigue Dental Implants Test System LFV-2-ME for fatigue testing of dental implants according to ISO 14801

These ergonomically and space saving servohydraulic test systems are designed for static to fatigue testing of dental implants according to ISO 14801 and other international standards.



The hydraulic power supply of the machine is integrated in the base of the testing machine making this series extremely compact, space saving and easy to install.

The fatigue rated actuator is conveniently mounted in the upper crosshead. The system incorporates an extremely versatile lower integral T-slot platen and offers good access to install and remove the specimen. The corrosion resistant T-slot platen is well suited to mount grips & fixtures, specimens and any kind of engineering components or finished goods.

Version ME: upper crosshead mechanically clamped with electrical height position

Hydraulic Power Pack integrated in the System Table with Oil-Air Cooler

To furnish the pressurized oil for servo-hydraulic testing machine.



The unit includes:

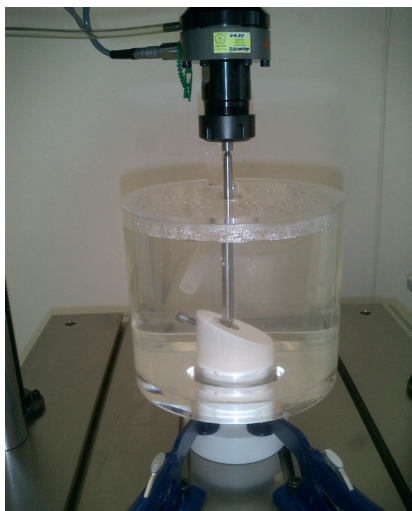
- Oil tank with low noise pump with constant oil delivery
- Tank with cleaning cover for easy servicing
- Air fan on the rear side of the power pack to avoid high air temperature inside the power pack
- Oil filter with clogged filter indication
- Electric pressure indicator for safety mode in case of failure of a hose, pipe etc.
- Max. oil temp. protection (shut down of the system)
- Including oil filling
- Oil level indication with electrical safety mode in case of low oil level
- Remote turn on/off control of hydraulic through testing software

Type Lfv-2-ME	Technical Data
Max. dynamic test load	±2 kN
Test frequency	up to 15 Hz
Machine accuracy according to	ISO 7500-1, ASTM E4
from 20 N to 2 kN	Grade 0.5
from 10 N to 20 N	Grade 1
Piston Stroke	50 (±25) mm
Piston stroke measurement accuracy according to ISO 9513	±0.5 %
Max. allowable piston speed	2 m/second
Clear distance between columns	440 mm
Column Diameter	2 x 50 mm
Width of T-Slot	545 mm
Depth of T-Slot	600 mm
Number of T-Slots	4
T-Slot Paten surface	Nickel-plated
Height of T-Slot platen from Floor	~800 mm
Test space between upper connecting detail and base platen	up to 750 mm
Max. test space between upper crosshead and lower T-Slot platen	960 mm
Stiffness of load frame	100 kN/mm
Colour	Blue
Electrical connection	3x400V, 50 Hz, 3 kW

Hydraulic Power Pack	Technical Data
Pump delivery at operating pressure	4 L/min constant
Power consumption	3 kW
Power supply	400V, 3PH+N+ E
Tank capacity	~40 litres
Sound with Oil-Air Cooler	69 dBA (1m)



Accessories for Fatigue Testing of Dental Implants and Prosthetic Counterparts according to ISO 14801.



Features

- Specimen holder with 30° angle
- Spherically seated loading device made from stainless steel
- Upper collet grip with set of collets

Bath for Saline Medium

in which the fixture for dental implants is immersed and subjected to saline environment.

Features

- Environmental Container suitable for usage with Lfv-series of testing machines
- Container contains a digital heating and control system for reaching temperatures of liquid up to 37°C (±2°C), with circulation pump including hoses to the environmental container as well as temperature feeler for temperature measurement inside the environmental container.

Alternative available variable angle specimen holder

